

### PRODUCT DESCRIPTION

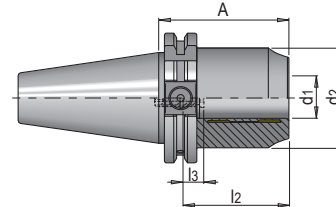
- » Very high torque transmission
- » With integrated length adjustment screw
- » High temperature resistance up to 170°
- » Optimal workpiece surfaces and longer service lives thanks to very good damping properties
- » With Balluff chip hole

### APPLICATION

- » Optimal for heavy duty cutting
- » For clamping tools with cylindrical shank and h6 shank tolerance
- » Use in combination with reduction sleeve enables flexible clamping
- » For drilling, reaming and milling

### INCLUDED IN THE DELIVERY

- » Includes built-in length adjustment screw, user guide and hexagon key



d2	l2	l3	Interface	d1	A	No.	#CU#
49	51	10	SK 40	20	64.5	HWZ 22651/SK40/20/ 64,5	XX,YY