

PRODUCT DESCRIPTION

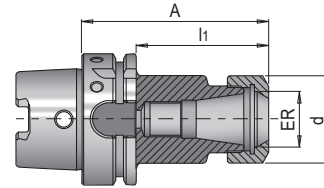
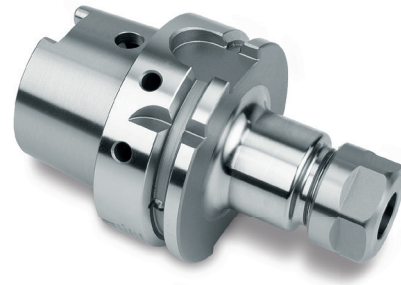
- » Optimal running smoothness due to hard turned shanks
- » Hard reworked puller grooves, HSK shoulder and HSK ejection surface
- » With length adjustment thread (without adjusting screw)
- » With Balluff chip hole

APPLICATION

- » For clamping tools with cylindrical shank in ER collets

INCLUDED IN THE DELIVERY

- » Includes clamping nut



l1	d	Clamping range	Interface	ER	A	No.	EUR
74	28	1-10	HSK-A 63	16	75	HWZ 1119/HSK-A 63/16/ 75	<>
74	28	1-10	HSK-A 63	16	100	HWZ 1119/HSK-A 63/16/100	<>
74	42	1-16	HSK-A 63	25	75	HWZ 1119/HSK-A 63/25/ 75	<>
74	42	1-16	HSK-A 63	25	100	HWZ 1119/HSK-A 63/25/100	<>
74	50	2-20	HSK-A 63	32	75	HWZ 1119/HSK-A 63/32/ 75	<>
74	50	2-20	HSK-A 63	32	100	HWZ 1119/HSK-A 63/32/100	<>
94	63	4-26	HSK-A 63	40	85	HWZ 1119/HSK-A 63/40/ 85	<>
94	63	4-26	HSK-A 63	40	120	HWZ 1119/HSK-A 63/40/120	<>